

Hampshire Water Transfer and Water Recycling Project

Environmental Statement – Figure 7.3 Designated heritage assets within the extended study area

VOLUME NUMBER: 6

PLANNING INSPECTORATE SCHEME NUMBER: WA010002

APPLICATION DOCUMENT REFERENCE: 6.3

APFP REGULATION: 5(2)(a)

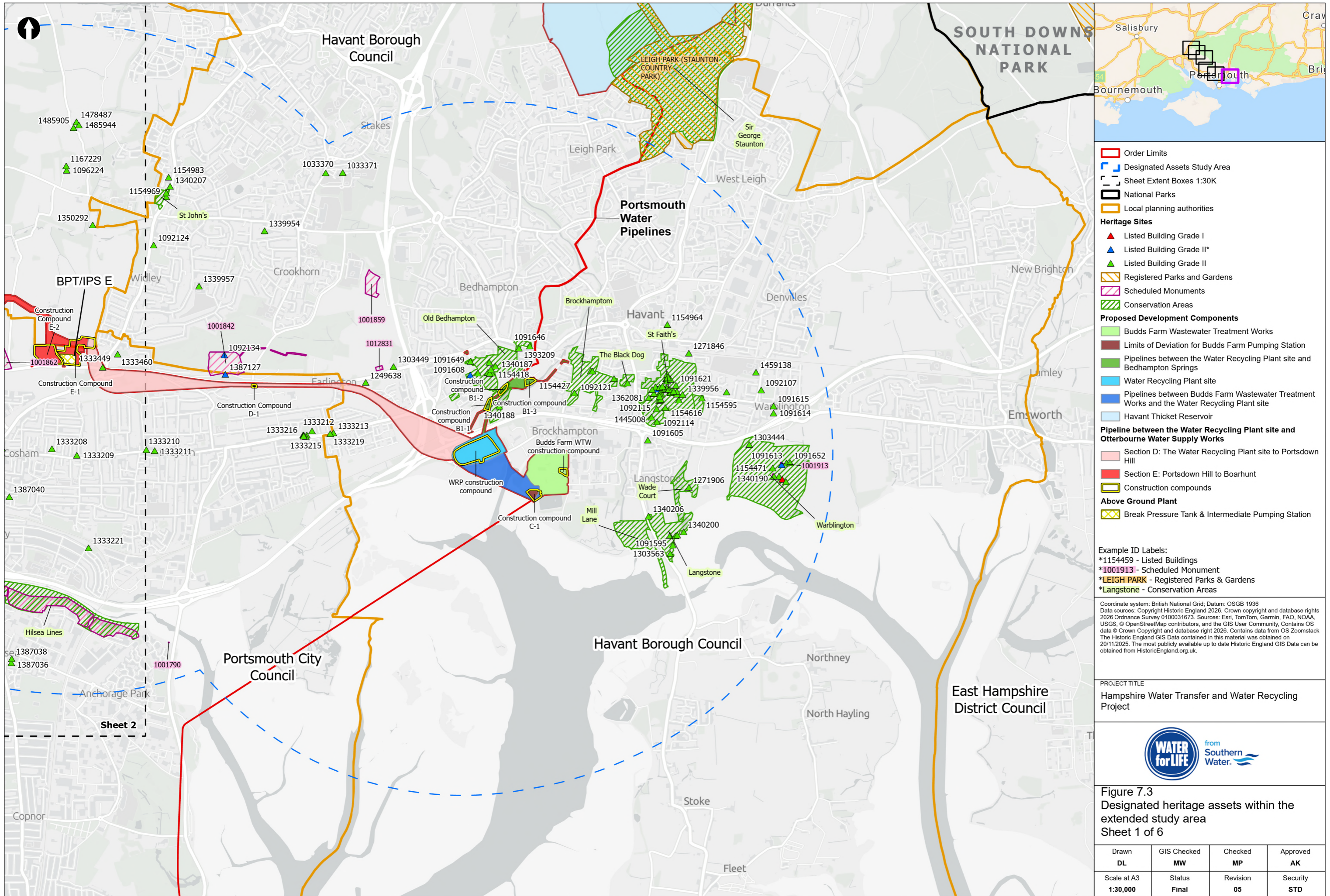
May 2026

Version 0



from
**Southern
Water.** 

The Southern Water logo graphic consists of three stylized, wavy blue lines of varying lengths, positioned to the right of the text 'Southern Water'.



- Order Limits
- Designated Assets Study Area
- Sheet Extent Boxes 1:30K
- National Parks
- Local planning authorities
- Heritage Sites**
- ▲ Listed Building Grade I
- ▲ Listed Building Grade II*
- ▲ Listed Building Grade II
- Registered Parks and Gardens
- Scheduled Monuments
- Conservation Areas
- Proposed Development Components**
- Budds Farm Wastewater Treatment Works
- Limits of Deviation for Budds Farm Pumping Station
- Pipelines between the Water Recycling Plant site and Bedhampton Springs
- Water Recycling Plant site
- Pipelines between Budds Farm Wastewater Treatment Works and the Water Recycling Plant site
- Havant Thicket Reservoir
- Pipeline between the Water Recycling Plant site and Otterbourne Water Supply Works**
- Section D: The Water Recycling Plant site to Portsdown Hill
- Section E: Portsdown Hill to Boarhunt
- Construction compounds
- Above Ground Plant**
- Break Pressure Tank & Intermediate Pumping Station

Example ID Labels:
 *1154459 - Listed Buildings
 *1001913 - Scheduled Monument
 *LEIGH PARK - Registered Parks & Gardens
 *Langstone - Conservation Areas

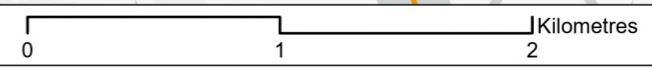
Coordinate system: British National Grid; Datum: OSGB 1936
 Data sources: Copyright Historic England 2026. Crown copyright and database rights 2026 Ordnance Survey 0100031673. Sources: Esri, TomTom, Garmin, FAO, NOAA, USGS, © OpenStreetMap contributors, and the GIS User Community. Contains OS data © Crown Copyright and database right 2026. Contains data from OS Zoomstack The Historic England GIS Data contained in this material was obtained on 20/11/2025. The most publicly available up to date Historic England GIS Data can be obtained from HistoricEngland.org.uk.

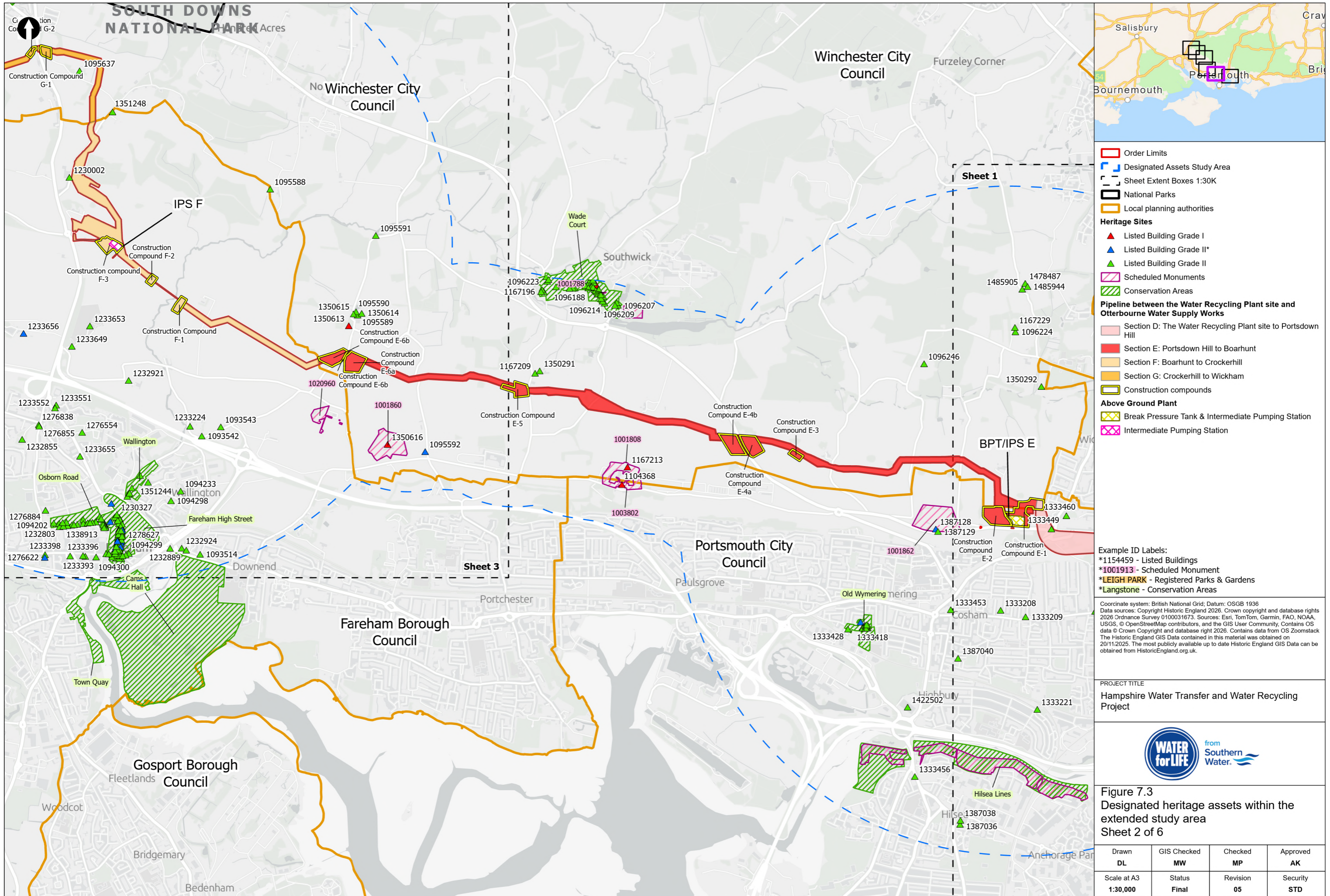
PROJECT TITLE
 Hampshire Water Transfer and Water Recycling Project



Figure 7.3
 Designated heritage assets within the extended study area
 Sheet 1 of 6

Drawn DL	GIS Checked MW	Checked MP	Approved AK
Scale at A3 1:30,000	Status Final	Revision 05	Security STD





- Order Limits
- Designated Assets Study Area
- Sheet Extent Boxes 1:30K
- National Parks
- Local planning authorities
- Heritage Sites**
- ▲ Listed Building Grade I
- ▲ Listed Building Grade II*
- ▲ Listed Building Grade II
- Scheduled Monuments
- Conservation Areas
- Pipeline between the Water Recycling Plant site and Otterbourne Water Supply Works**
- Section D: The Water Recycling Plant site to Portsdown Hill
- Section E: Portsdown Hill to Boarhunt
- Section F: Boarhunt to Crockerhill
- Section G: Crockerhill to Wickham
- Construction compounds
- Above Ground Plant**
- Break Pressure Tank & Intermediate Pumping Station
- Intermediate Pumping Station

Example ID Labels:
 *1154459 - Listed Buildings
 *1001913 - Scheduled Monument
 *LEIGH PARK - Registered Parks & Gardens
 *Langstone - Conservation Areas

Coordinate system: British National Grid; Datum: OSGB 1936
 Data sources: Copyright Historic England 2026. Crown copyright and database rights 2026 Ordnance Survey 0100031673. Sources: Esri, TomTom, Garmin, FAO, NOAA, USGS, © OpenStreetMap contributors, and the GIS User Community. Contains OS data © Crown Copyright and database right 2026. Contains data from OS Zoomstack The Historic England GIS Data contained in this material was obtained on 20/11/2025. The most publicly available up to date Historic England GIS Data can be obtained from HistoricEngland.org.uk.

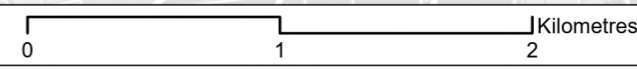
PROJECT TITLE
 Hampshire Water Transfer and Water Recycling Project



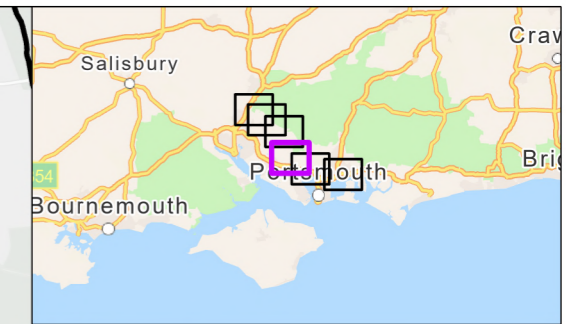
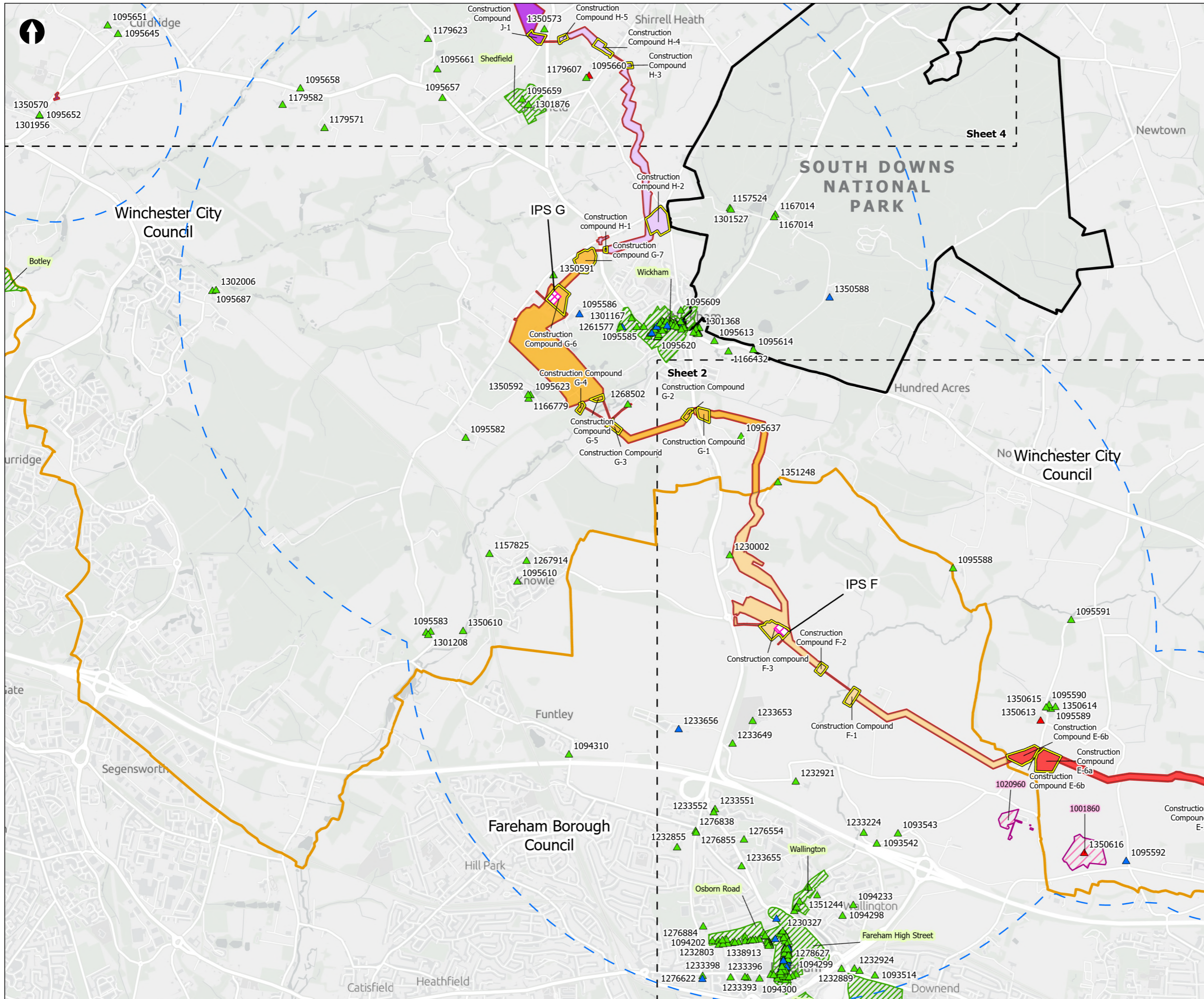
Figure 7.3
 Designated heritage assets within the extended study area
 Sheet 2 of 6

Drawn DL	GIS Checked MW	Checked MP	Approved AK
Scale at A3 1:30,000	Status Final	Revision 05	Security STD

© Southern Water 2026
 This document is issued for the party which commissioned it and for specific purposes connected with the captioned project only. It should not be relied upon by any other party or used for any other purpose.
 We accept no responsibility for the consequences of this document being relied upon by any other party, or being used for any other purpose, or containing any error or omission which is due to an error or omission in data supplied to us by other parties.



Drawing Number
PC5223-RHD-ES-ZZ-D-Z-0115



Order Limits

- Order Limits
- Designated Assets Study Area
- Sheet Extent Boxes 1:30K
- National Parks
- Local planning authorities

Heritage Sites

- Listed Building Grade I
- Listed Building Grade II*
- Listed Building Grade II
- Scheduled Monuments
- Conservation Areas

Pipeline between the Water Recycling Plant site and Otterbourne Water Supply Works

- Section E: Portsdown Hill to Boarhunt
- Section F: Boarhunt to Crockerhill
- Section G: Crockerhill to Wickham
- Section H: Wickham to Shedfield
- Section J: Shedfield to the River Hamble
- Construction compounds

Above Ground Plant

- Intermediate Pumping Station

Example ID Labels:

- *1154459 - Listed Buildings
- *1001913 - Scheduled Monument
- *LEIGH PARK - Registered Parks & Gardens
- *Langstone - Conservation Areas

Coordinate system: British National Grid; Datum: OSGB 1936
 Data sources: Copyright Historic England 2026. Crown copyright and database rights 2026 Ordnance Survey 0100031673. Sources: Esri, TomTom, Garmin, FAO, NOAA, USGS, © OpenStreetMap contributors, and the GIS User Community, Contains OS data © Crown Copyright and database right 2026. Contains data from OS Zoomstack The Historic England GIS Data contained in this material was obtained on 20/11/2025. The most publicly available up to date Historic England GIS Data can be obtained from HistoricEngland.org.uk.

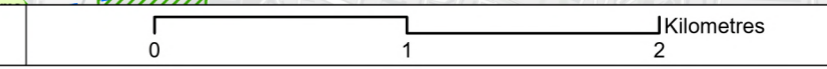
PROJECT TITLE
 Hampshire Water Transfer and Water Recycling Project



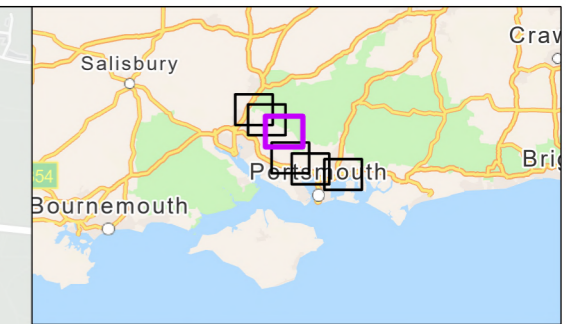
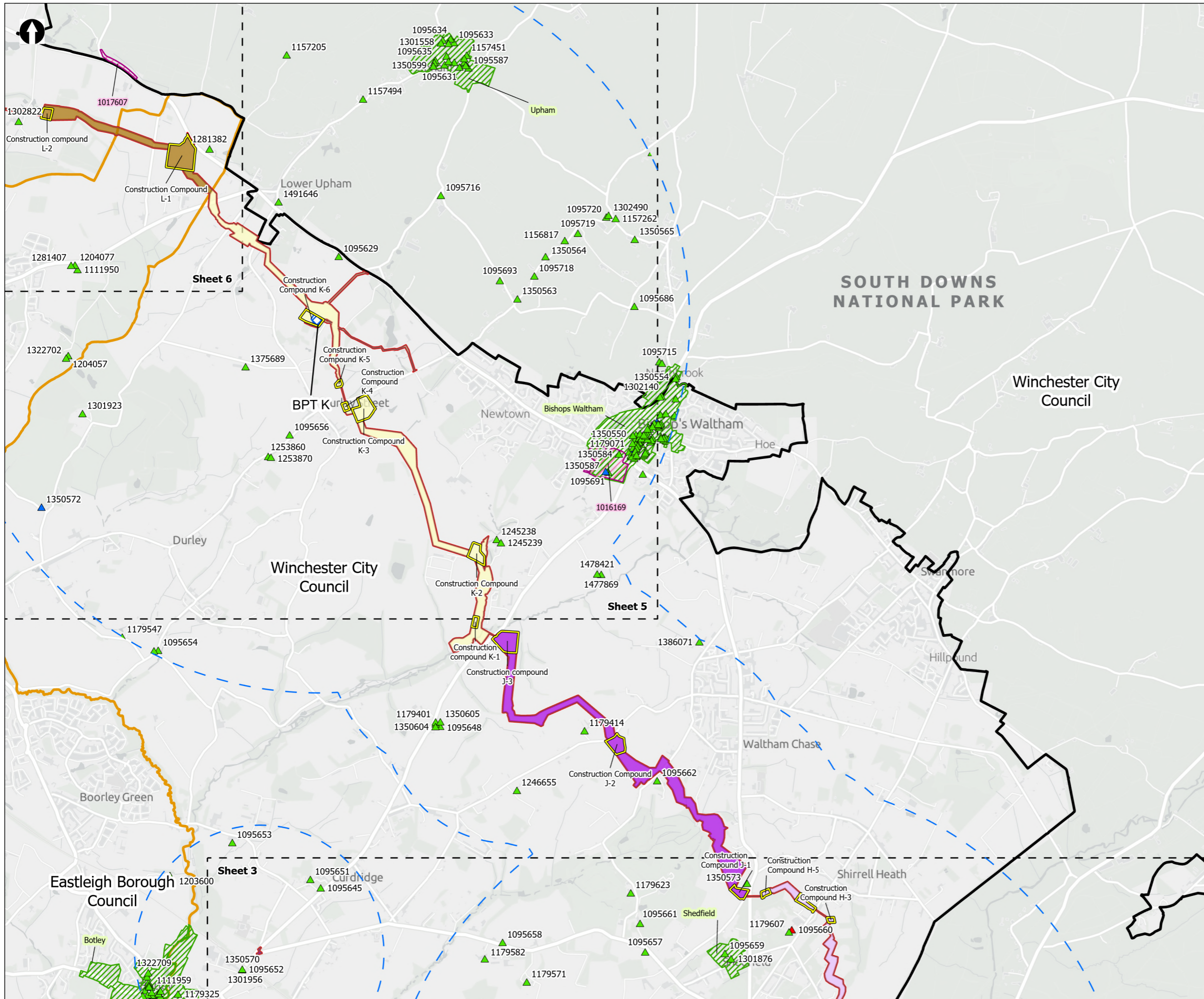
Figure 7.3
 Designated heritage assets within the extended study area
 Sheet 3 of 6

Drawn DL	GIS Checked MW	Checked MP	Approved AK
Scale at A3 1:30,000	Status Final	Revision 05	Security STD

© Southern Water 2026
 This document is issued for the party which commissioned it and for specific purposes connected with the captioned project only. It should not be relied upon by any other party or used for any other purpose.
 We accept no responsibility for the consequences of this document being relied upon by any other party, or being used for any other purpose, or containing any error or omission which is due to an error or omission in data supplied to us by other parties.



Drawing Number
PC5223-RHD-ES-ZZ-D-Z-0115



- Order Limits
- Designated Assets Study Area
- Sheet Extent Boxes 1:30K
- National Parks
- Local planning authorities
- Heritage Sites**
- ▲ Listed Building Grade I
- ▲ Listed Building Grade II*
- ▲ Listed Building Grade II
- Scheduled Monuments
- Conservation Areas
- Pipeline between the Water Recycling Plant site and Otterbourne Water Supply Works**
- Section H: Wickham to Shedfield
- Section J: Shedfield to the River Hamble
- Section K: The River Hamble to Lower Upham
- Section L: Lower Upham to Brambridge
- Construction compounds
- Above Ground Plant**
- Break Pressure Tank

Example ID Labels:
 *1154459 - Listed Buildings
 *1001913 - Scheduled Monument
 *LEIGH PARK - Registered Parks & Gardens
 *Langstone - Conservation Areas

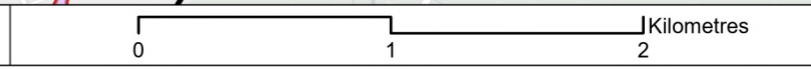
Coordinate system: British National Grid; Datum: OSGB 1936
 Data sources: Copyright Historic England 2026. Crown copyright and database rights 2026 Ordnance Survey 0100031673. Sources: Esri, TomTom, Garmin, FAO, NOAA, USGS, © OpenStreetMap contributors, and the GIS User Community, Contains OS data © Crown Copyright and database right 2026. Contains data from OS Zoomstack The Historic England GIS Data contained in this material was obtained on 20/11/2025. The most publicly available up to date Historic England GIS Data can be obtained from HistoricEngland.org.uk.

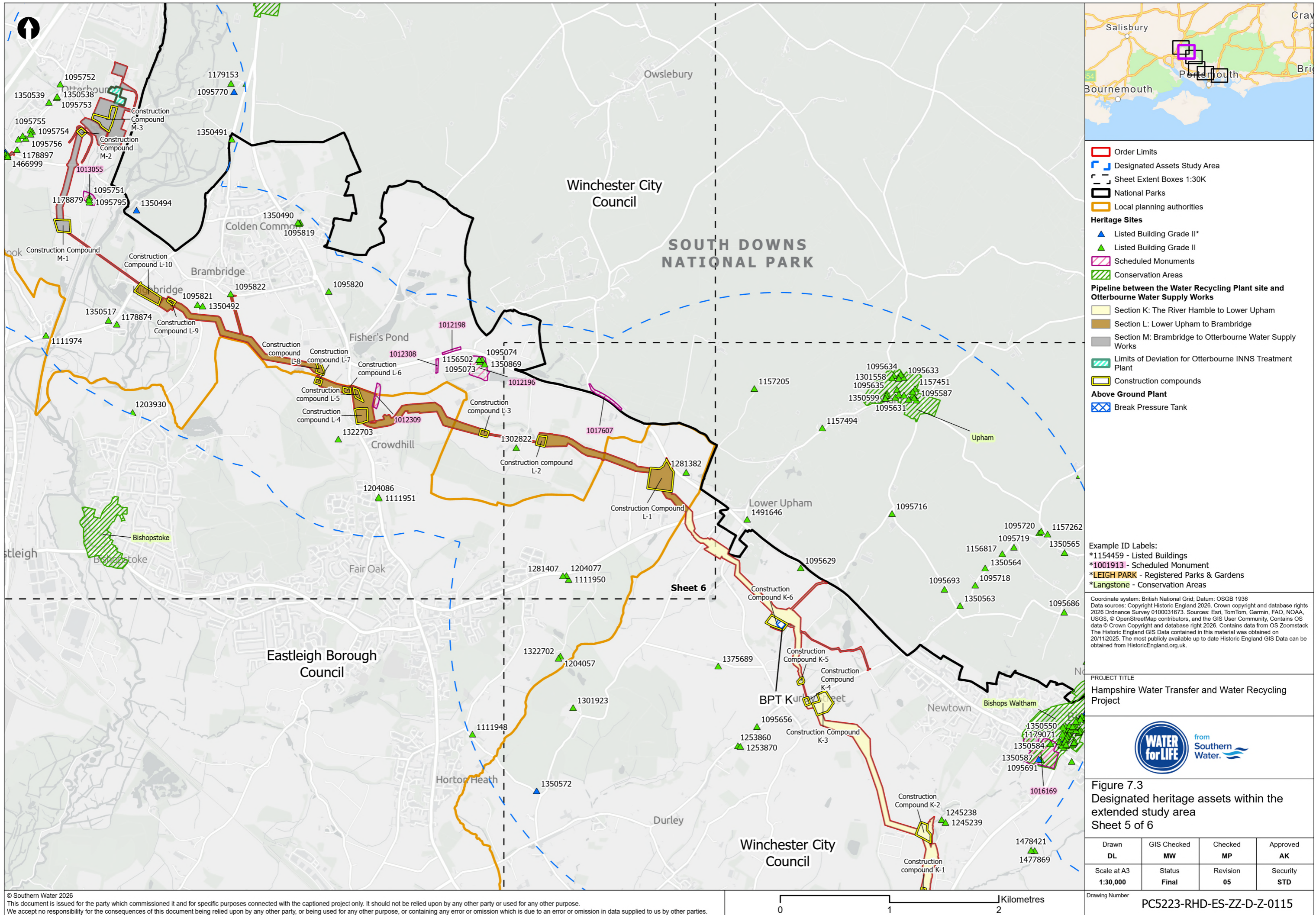
PROJECT TITLE
 Hampshire Water Transfer and Water Recycling Project



Figure 7.3
 Designated heritage assets within the extended study area
 Sheet 4 of 6

Drawn DL	GIS Checked MW	Checked MP	Approved AK
Scale at A3 1:30,000	Status Final	Revision 05	Security STD





- Order Limits
- Designated Assets Study Area
- Sheet Extent Boxes 1:30K
- National Parks
- Local planning authorities
- Heritage Sites**
- ▲ Listed Building Grade II*
- ▲ Listed Building Grade II
- Scheduled Monuments
- Conservation Areas
- Pipeline between the Water Recycling Plant site and Otterbourne Water Supply Works**
- Section K: The River Hamble to Lower Upham
- Section L: Lower Upham to Brambridge
- Section M: Brambridge to Otterbourne Water Supply Works
- Limits of Deviation for Otterbourne INNS Treatment Plant
- Construction compounds
- Above Ground Plant**
- Break Pressure Tank

Example ID Labels:
 *1154459 - Listed Buildings
 *101913 - Scheduled Monument
 *LEIGH PARK - Registered Parks & Gardens
 *Langstone - Conservation Areas

Coordinate system: British National Grid; Datum: OSGB 1936
 Data sources: Copyright Historic England 2026. Crown copyright and database rights 2026 Ordnance Survey 0100031673. Sources: Esri, TomTom, Garmin, FAO, NOAA, USGS, © OpenStreetMap contributors, and the GIS User Community. Contains OS data © Crown Copyright and database right 2026. Contains data from OS Zoomstack The Historic England GIS Data contained in this material was obtained on 20/11/2025. The most publicly available up to date Historic England GIS Data can be obtained from HistoricEngland.org.uk.

PROJECT TITLE
 Hampshire Water Transfer and Water Recycling Project

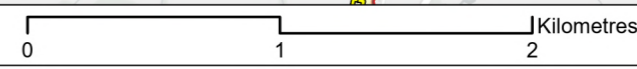


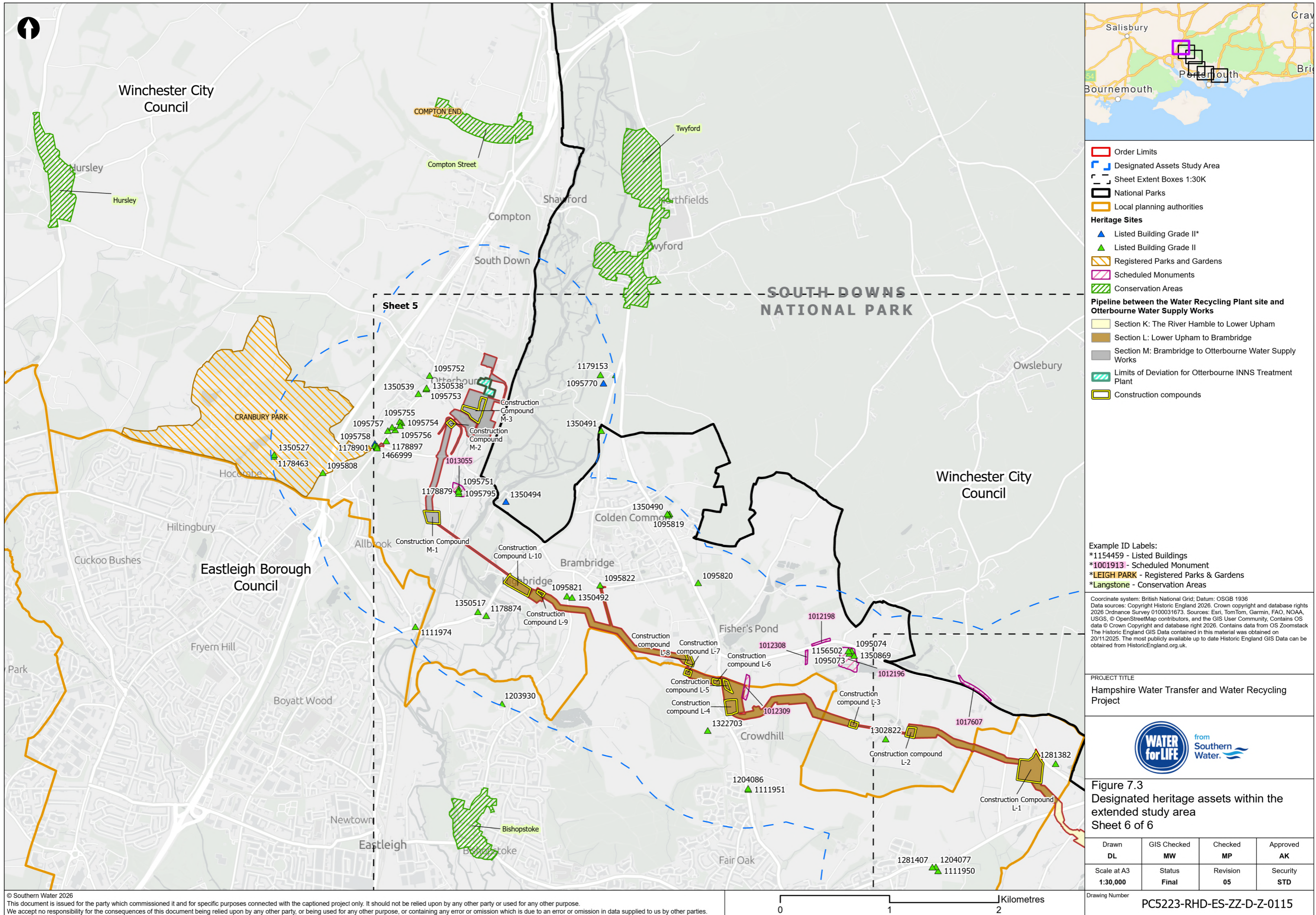
Figure 7.3
 Designated heritage assets within the extended study area
 Sheet 5 of 6

Drawn DL	GIS Checked MW	Checked MP	Approved AK
Scale at A3 1:30,000	Status Final	Revision 05	Security STD

Drawing Number
PC5223-RHD-ES-ZZ-D-Z-0115

© Southern Water 2026
 This document is issued for the party which commissioned it and for specific purposes connected with the captioned project only. It should not be relied upon by any other party or used for any other purpose. We accept no responsibility for the consequences of this document being relied upon by any other party, or being used for any other purpose, or containing any error or omission which is due to an error or omission in data supplied to us by other parties.





- Order Limits
- Designated Assets Study Area
- Sheet Extent Boxes 1:30K
- National Parks
- Local planning authorities
- Heritage Sites**
- ▲ Listed Building Grade II*
- ▲ Listed Building Grade II
- Registered Parks and Gardens
- Scheduled Monuments
- Conservation Areas
- Pipeline between the Water Recycling Plant site and Otterbourne Water Supply Works**
- Section K: The River Hamble to Lower Upham
- Section L: Lower Upham to Brambridge
- Section M: Brambridge to Otterbourne Water Supply Works
- Limits of Deviation for Otterbourne INNS Treatment Plant
- Construction compounds

Example ID Labels:
 *1154459 - Listed Buildings
 *1001913 - Scheduled Monument
 *LEIGH PARK - Registered Parks & Gardens
 *Langstone - Conservation Areas

Coordinate system: British National Grid; Datum: OSGB 1936
 Data sources: Copyright Historic England 2026. Crown copyright and database rights 2026 Ordnance Survey 010031673. Sources: Esri, TomTom, Garmin, FAO, NOAA, USGS, © OpenStreetMap contributors, and the GIS User Community. Contains OS data © Crown Copyright and database right 2026. Contains data from OS Zoomstack The Historic England GIS Data contained in this material was obtained on 20/11/2025. The most publicly available up to date Historic England GIS Data can be obtained from HistoricEngland.org.uk.

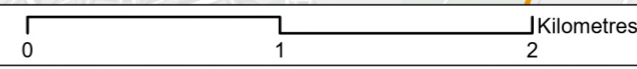
PROJECT TITLE
 Hampshire Water Transfer and Water Recycling Project



Figure 7.3
 Designated heritage assets within the extended study area
 Sheet 6 of 6

Drawn DL	GIS Checked MW	Checked MP	Approved AK
Scale at A3 1:30,000	Status Final	Revision 05	Security STD

© Southern Water 2026
 This document is issued for the party which commissioned it and for specific purposes connected with the captioned project only. It should not be relied upon by any other party or used for any other purpose.
 We accept no responsibility for the consequences of this document being relied upon by any other party, or being used for any other purpose, or containing any error or omission which is due to an error or omission in data supplied to us by other parties.



Drawing Number
PC5223-RHD-ES-ZZ-D-Z-0115